

# Fibre reinforced plastic walkways



Independently certified safety

## Fibre-reinforced plastic walkways for safe roof access

Access rooftop plant and equipment the simple, safe way with Defender fibre reinforced plastic (FRP) walkway systems.

If the plant cannot be moved to ground level, walkways are the regulator's preferred control for the risk of falls and the most certain way to avoid roof damage.

### Safe, robust, easy

- > Keep traffic off the roof
- > Chemical and corrosion resistance
- > Non-slip surface
- > Durable
- > Non-sparking and non-conductive material
- > Food industry approved
- > Installed by certified installers with specialised training.
- > Easy-to-see yellow
- > A designated path of travel for employees and contractors.
- > Access for workers without the need for specialist height safety skills
- > No need for time consuming height safety inductions
- > Lower training and administrative costs



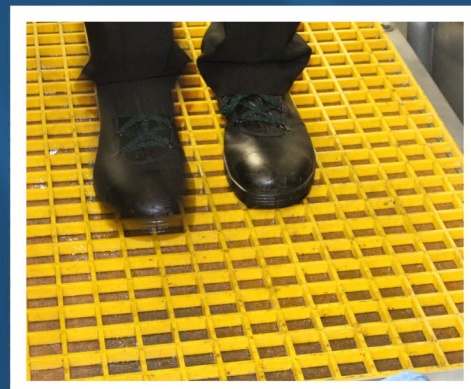
### Technical Indexes of Liquid Resin

Item	Unit	Value	Standard
Appearance	-	Transparent Viscous Liquid	Visual
Chroma (Pt-Co)	-	25-40	GB7193.7-92
Acid Value	mgKOH/g	17-23	GB2895-82
Viscosity(25°C)	mPa.S	400-750	GB7193.1-87
Gel Time	min	4-9	GB7193.6-87
Non-Volatile	%	61-67	GB7193.3-87
Thermal Stability (80°C)	h	≥24	GB7193.5-87



### Performance Indexes of Resin Casting Substance

Item	Unit	Value	Standard
Barcol hardness	≥	Barcol 38	GB3854-1983
Tensile strength	≥	MPa 60	GB2568-1995
Tensile modulus	≥	MPa 3000	GB2568-1995
Elongation at break	≥	% 2.5	GB2568-1995
Flexural strength	≥	MPa 90	GB2570-1995
Flexural modulus	≥	MPa 3000	GB2570-1995
Impact strength	≥	KJ/m2 7	GB2571-1995
H.D.T	≥	°C 70	GB1634-1989



Independently certified safety

To order, receive a quote, or for more information contact us today at:

[enquiries@workplacedefender.com.au](mailto:enquiries@workplacedefender.com.au)  
or call **1300 013 794**

[www.workplacedefender.com.au](http://www.workplacedefender.com.au)

Certified Defender™ Installer:

**workplace  
access&safety®**

the fall prevention specialists

Telephone 1300 552 984

[www.workplaceaccess.com.au](http://www.workplaceaccess.com.au)