

HIGH DANGER Falls From Heights

Working at height remains one of the greatest risks to the safety of workers across Australia and the incidence of falls continues to alarm with Safe Work Australia releasing its report on Work-related Injuries and Fatalities Involving a Fall from Height (2013).

The report analyses fatalities and serious injuries and shines a spotlight on the deadly dangers of working at height and serves as a timely reminder to rethink how your business does height safety.

**workplace
access&safety®**

1300 552 984 workplaceaccess.com.au

Fatalities involving a fall from height

232 workers were killed following a fall from a height over an eight-year period from 1 July 2003 to 30 June 2011

31% of the falls were from a height of two metres or less with a further 19% involving falls from between two and three metres

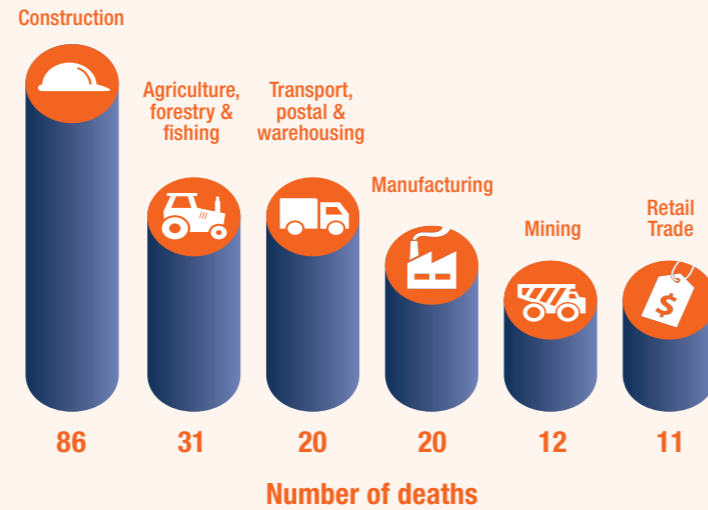
25% of all construction fatalities resulted from a fall from height

1 person on average dies due to a fall from height in Australian workplaces EVERY FORTNIGHT

There has been no improvement in the number of fatalities or the fatality rate in the past eight years

Top Bottom 6 industries

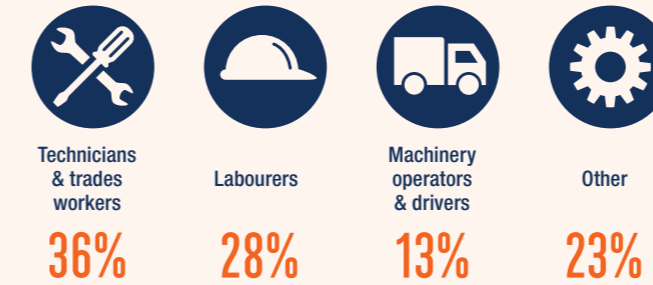
The Construction industry accounted for over one-third of falls-related fatalities in the 2003-11 period - more than 3 times the number of the next highest industry.



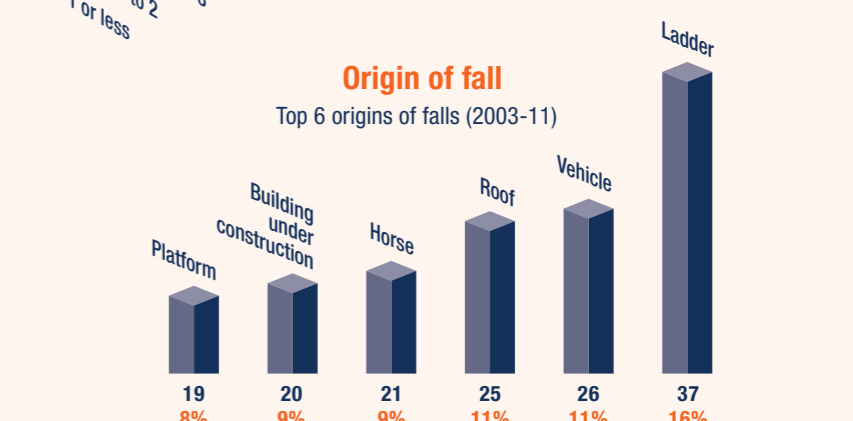
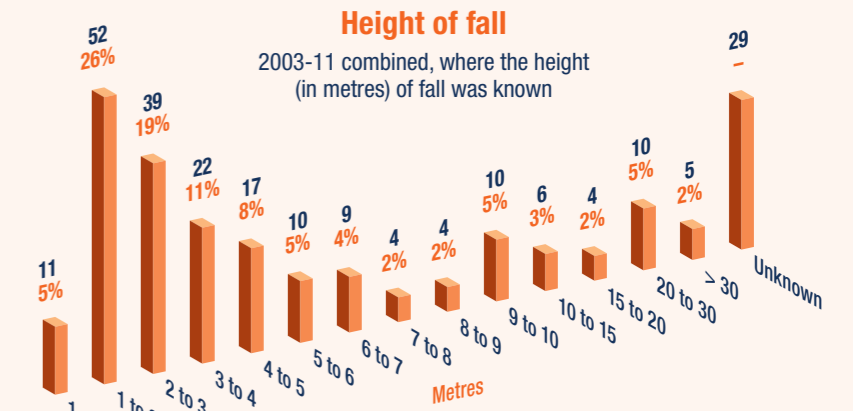
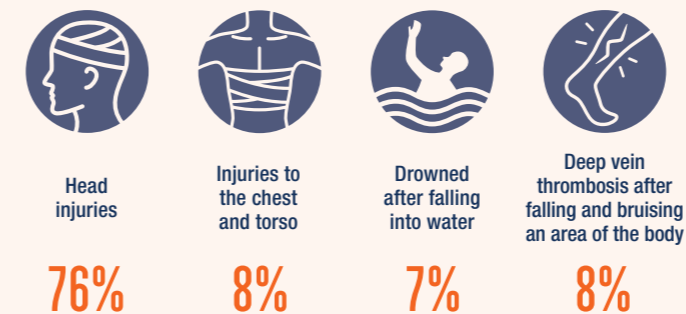
Worker fatalities involving a fall from height: number and percentage of fatalities and fatality rate (deaths per 100, 000 workers) by industry, 2008-11

Occupation

Fatalities involving a fall from height by occupation



Cause of death



Serious injuries due to falls from height

A workers' compensation claim is classed as serious when it involves a fatality, a permanent incapacity or a temporary incapacity that requires one or more weeks off work.

7730 claims for serious injury were lodged due to a fall from a height in 2010-11

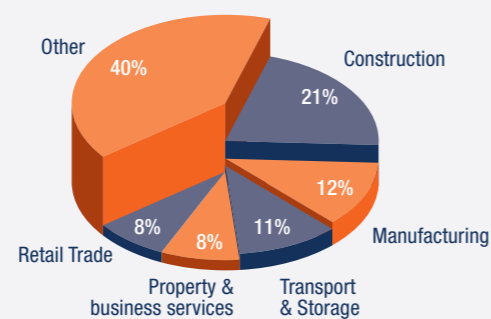
21 employees lodged a claim each day for a falls-related injury that required one or more weeks off work

6.2 weeks Time off work a typical falls related claim required. Considerably longer than the 4.4 weeks for all serious injury claims

All Information in this document has been adapted from Work-related Injuries and Fatalities Involving a Fall from Height, Australia, October 2013. ©Safe Work Australia.

Industry

More than half the serious injuries in the workplace were from 5 industries.



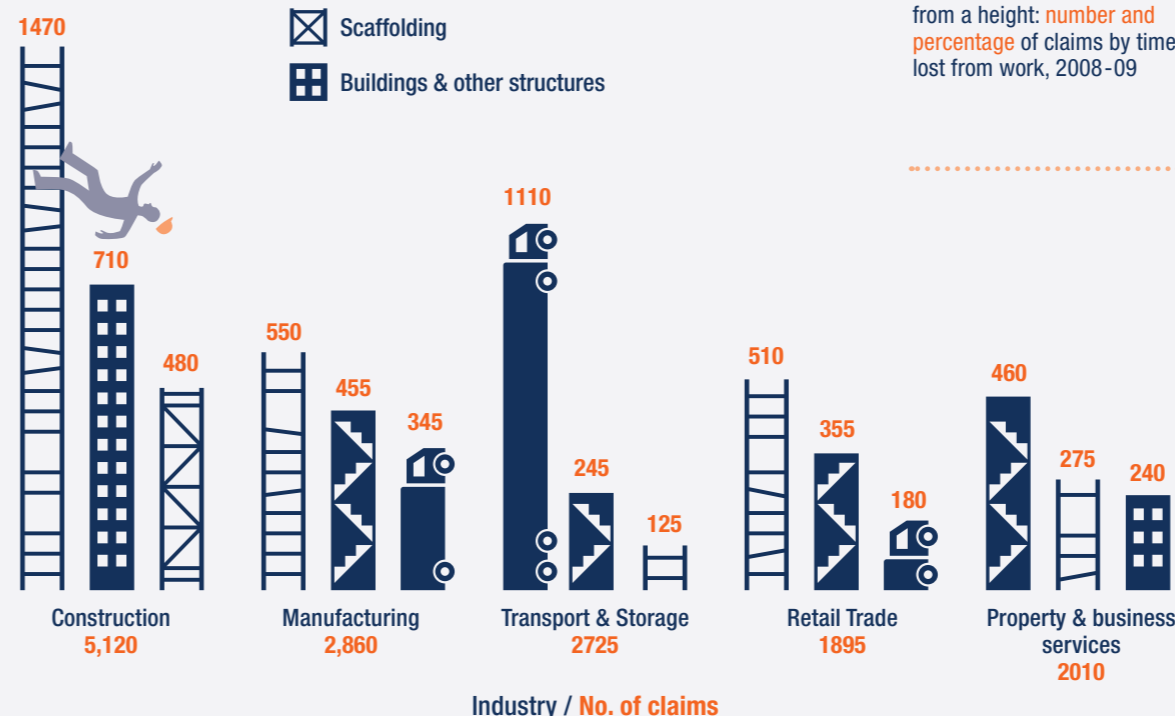
Occupation

Three occupations accounted for two out of every three (64%) serious claims due to a fall from height over the three years 2009-11. These were: (% of claims)



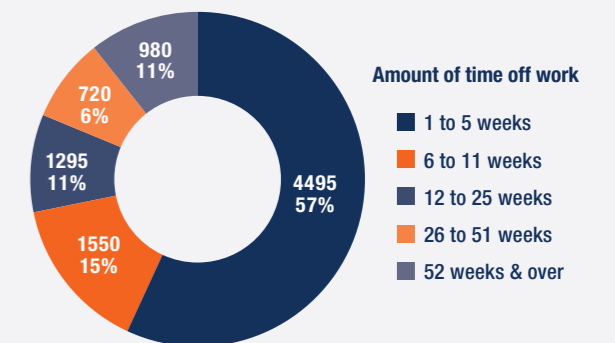
Origin of fall

- Steps & stairways
- Ladders
- Trucks, semi-trailers, lorries
- Scaffolding
- Buildings & other structures



Falls related injuries equate to more time off work

Serious claims due to falls from a height: number and percentage of claims by time lost from work, 2008-09



Bodily location of injury

Percentage of claims/Median time lost (weeks)

